

Multnomah Athletic Club

For your next meeting or special event



HOLLAND STUDIOS

CATERING

- More than 15,000 square feet of event space
- Groups of five to 400 people
- Twelve private rooms and one outdoor venue
- Experienced and dedicated staff
- State-of-the-art audiovisual equipment
- Technical staff capabilities
- WiFi Internet access
- Conveniently located to downtown



TIM GUNTHER



TIM GUNTHER

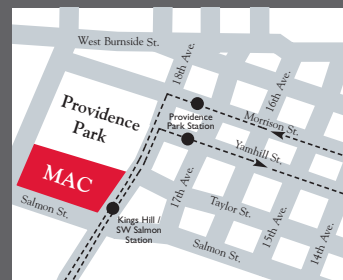


Multnomah Athletic Club

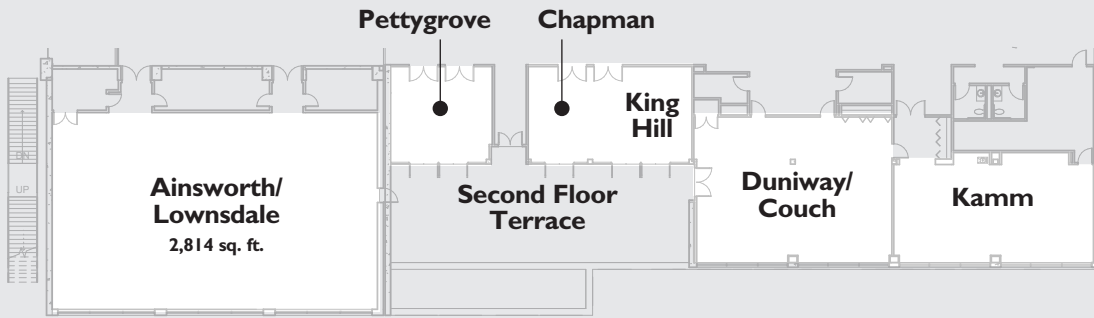
1849 SW Salmon Street • Portland, OR 97205

phone: 503-517-6600

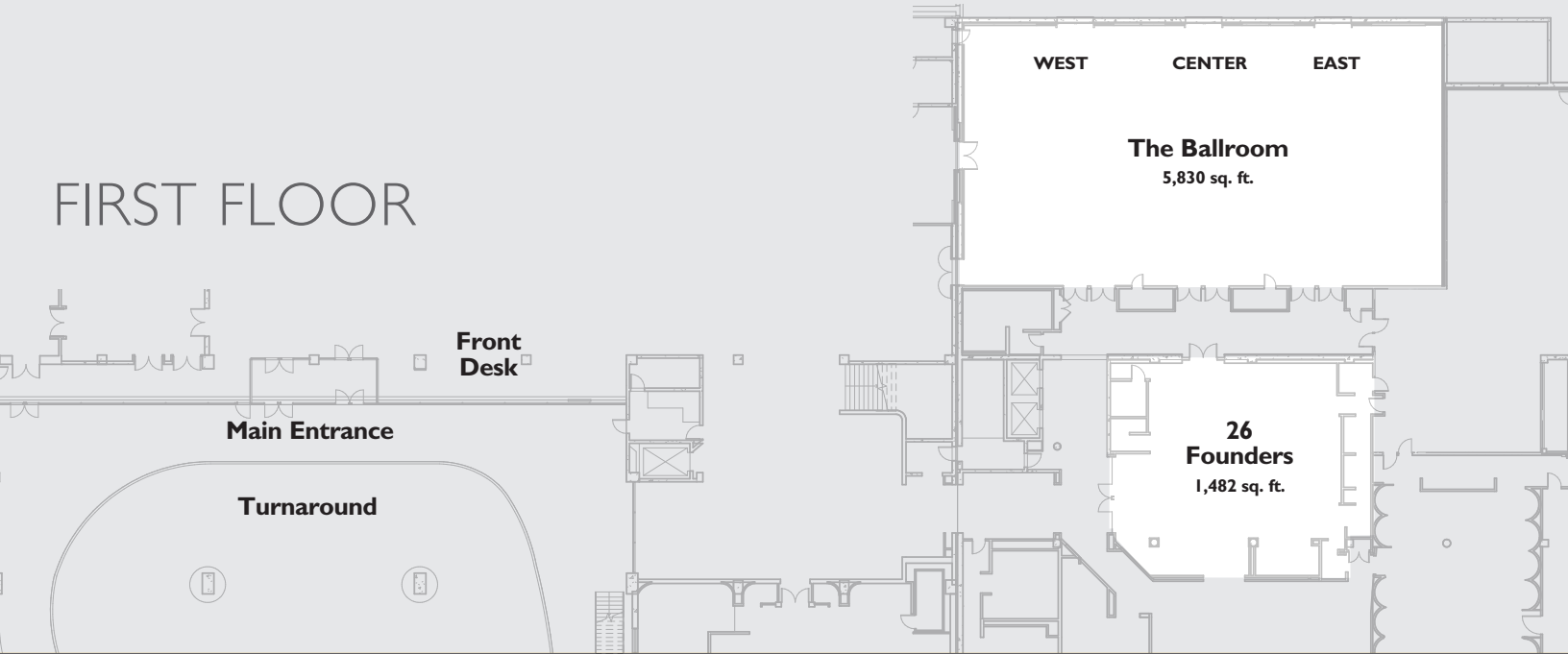
www.theMAC.com/catering



SECOND FLOOR



FIRST FLOOR



ROOM CAPACITY CHART

Room	Theater	Classroom	Outside U-Shape	Conference or Hollow Square	Rounds of 8	Chairs for Rounds of 8	72 inch Rounds	Flow Reception	Ceiling Height	Dimensions L x W	Square Feet
Ainsworth/Lownsdale	225	140	50	77	25	200	16	225	9' 8"	42 x 67	2,814
Ainsworth	75	48	34	38	8	64	6	75	9' 8"	42 x 22	924
Lownsdale	150	96	50	55	18	144	12	150	9' 8"	42 x 45	1,890
Pettygrove	24	16	18	22	3	24	2	28	9'	19 x 20	380
Chapman	16			16	1	8	1	10	9'	19 x 13	247
King Hill	30	20	18	22	3	24	2	28	9'	19 x 21	399
Duniway/Couch	80	48	34	40	8	64	6	70	9'	29 x 41	1,189
Duniway	40	32	26	30	4	32	3	40	9'	29 x 19	551
Couch	40	32	26	30	4	32	3	40	9'	29 x 21	609
Kamm	60	48	38	38	7	60		64	9'	19 x 42	798
The Ballroom	400	338	115		50	400	34	404	11' 8"	55 x 106	5,830
West/Center Ballroom	350	177	77		35	280	22	300	11' 8"	55 x 67	3,685
East/Center Ballroom	350	150	77		35	280	22	300	11' 8"	55 x 67	3,685
East or West Ballroom	200	100	54		20	160	14	200	11' 8"	55 x 39	2,145
Center Ballroom	150	60	48		15	120	11	200	11' 8"	55 x 28	1,540
26 Founders	140	92	41		15	112		120	9' 4"	38 x 39	1,482

The capacity chart does not reflect the additional space needed for audiovisual equipment or staging.